

MAKE A CANNON



Note for parents:

A parent /guardian must be present to ensure the safety of the children using our online tutorials. Parents will be required to maintain adequate supervision of their child while they are working on their cannon. Parents help may be needed with some children in preparing crafts, particularly when they need to use scissors.



ATHLONE CASTLE
VISITOR CENTRE



TO MAKE THE CANNON YOU WILL NEED:

1 Cardboard Tube (we used a Pringle's can)

A4 Piece of Cardboard

6 Paper Straws

1 Balloon

Paintbrush

Black Paint

Glue

Pencil

Black Marker

Can Opener

6-inch Saucer

Scissors

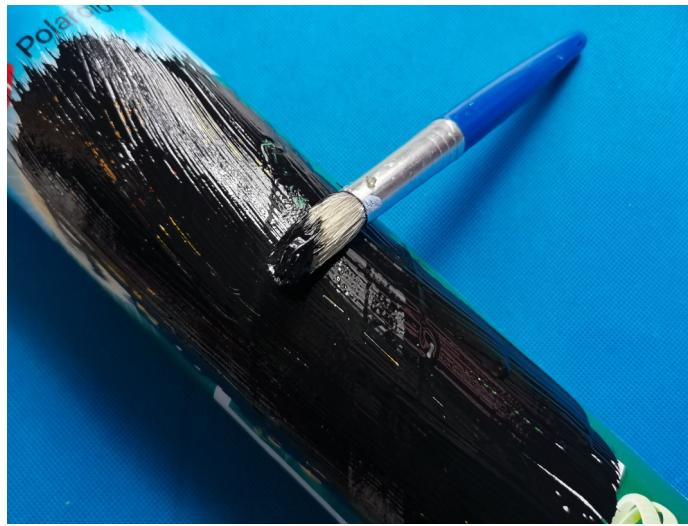
Ruler





Step 1

Use the can opener to remove the bottom of the Pringles can. Be careful of the sharp edges!



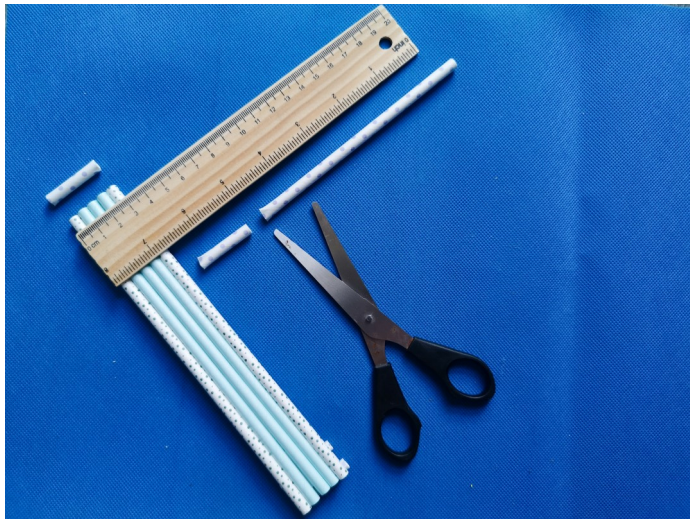
Step 2

Paint the outside of the tube. Leave it to dry.



Step 3

Glue 5 straws together to make a board.



Step 4

From the 6th straw cut two pieces that are the same width as the board. Use the ruler to help you measure it. Keep the remaining part of the straw for step 10



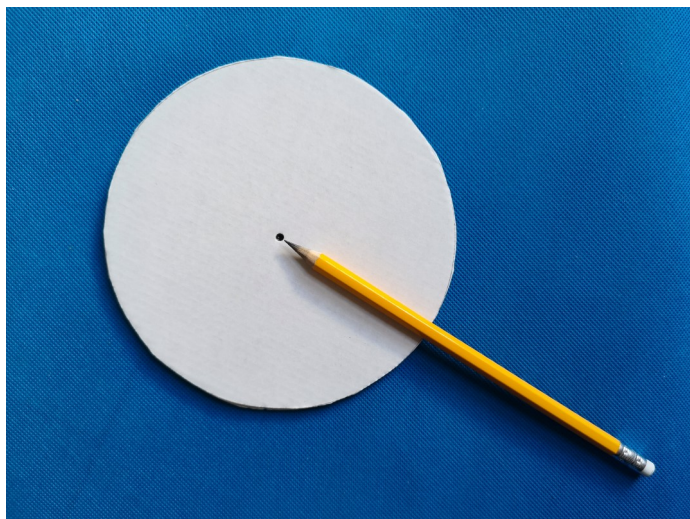
Step 5

Glue one of the short pieces of straw across the top of your straw-board and the second one below it leaving enough space to fit another straw in between.



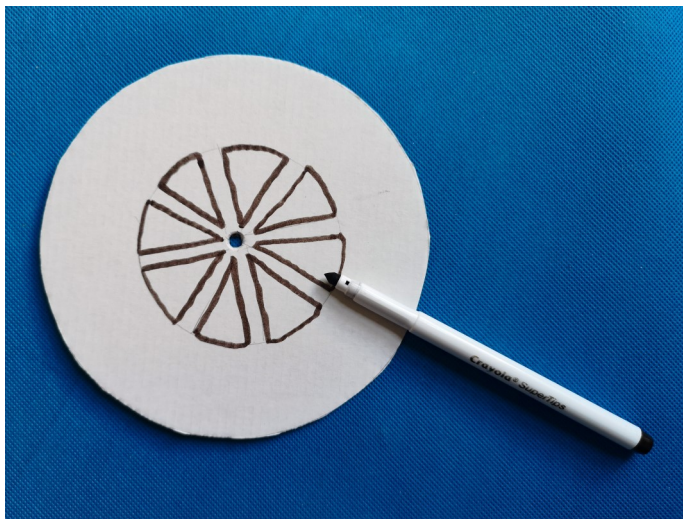
Step 6

Place the saucer upside down on one half of the cardboard, trace its shape with a pencil then repeat on the other half. Cut the two circles out.



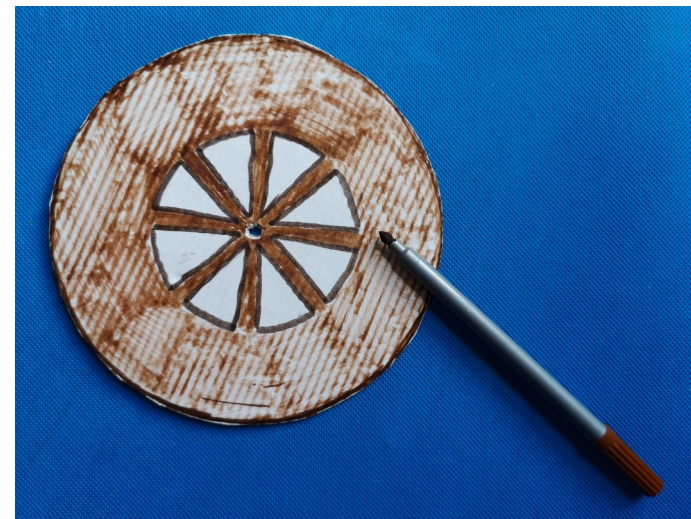
Step 7

Draw a dot in the middle of your circles and push the pencil through the cardboard to make a small hole.



Step 8

Turn the circles into wheels! Pencil a smaller circle in the middle and divide it into little segments (like the insides of a lemon) Trace the shape of segments with the black marker.



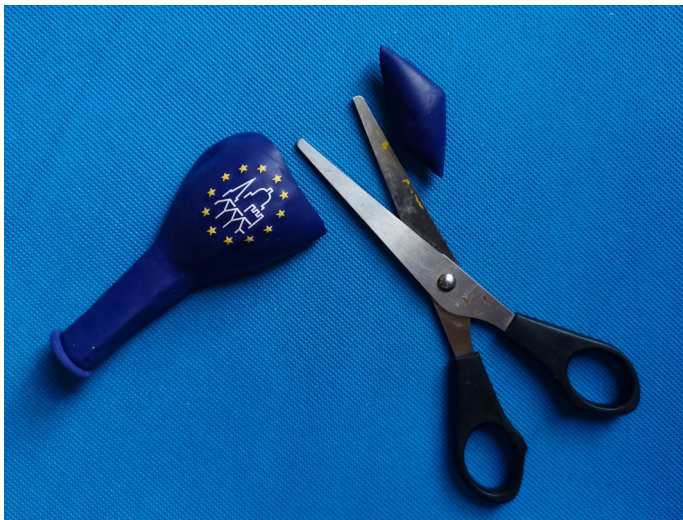
Step 9

Colour in the wheels (except your lemon-segments) with brown marker/ crayon



Step 10

Put the remining piece of straw through the holes in your wheels (make sure the wheels you draw are facing out)



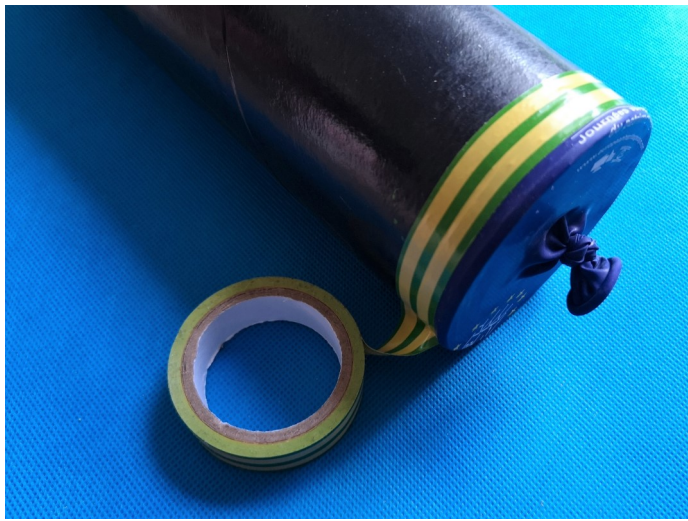
Step 11

Cut the top of the balloon.



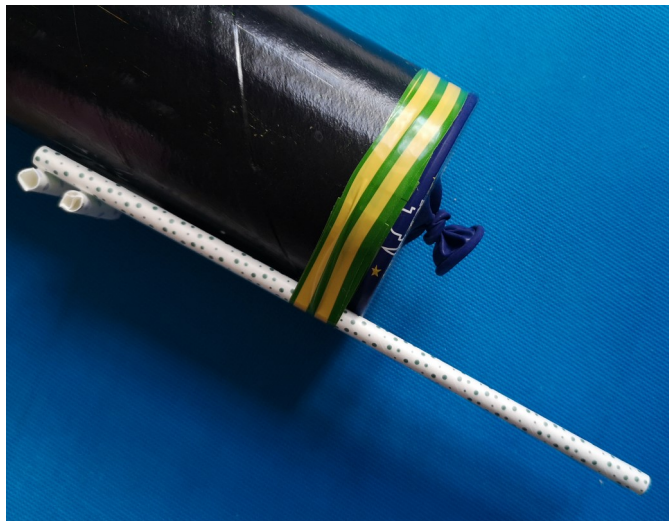
Step 12

Make sure the paint on your cannon is dry before moving forward! Stretch the cut balloon over one end of the tube. Tie a knot in the end of the balloon.



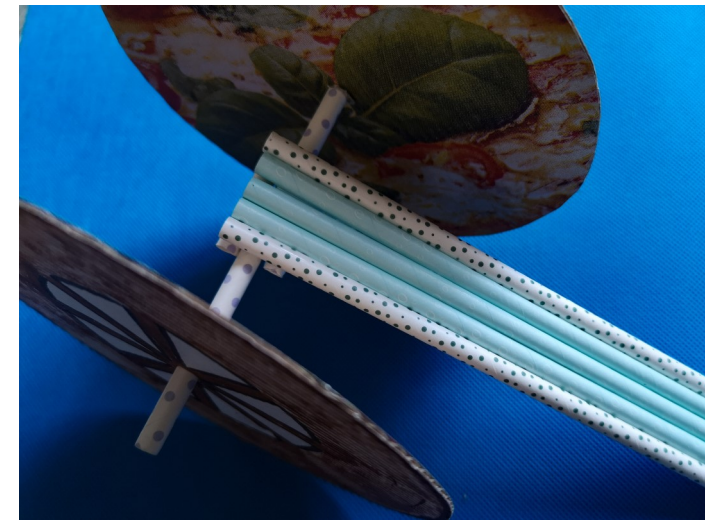
Step I3

Secure the balloon to the tube with sticky tape.



Step I4

It's time to put your Cannon together!!
Place your cannon (tube) on top of the straw-board.
Make sure the covered end reaches the middle of the board. Secure it with sticky tape.



Step I5

Place the cannon on its wheels (to make it easier to see, we took that photo before attaching the cannon to the board)



Step I6

Load your cannon with a soft ball (scrunches of newspaper works well)
pull on the end of balloon and release it to fire!

Congratulations you have just made your very own cannon!